



C-Sonnar T* 1.5/50



Features

- Fast f/1.5 aperture
- Precise manual focusing
- Robust full-metal construction
- Identical color reproduction of all models
- For industrial cameras with M42-Mount up to sensor sizes of 24x36 mm
- Compact
- Low Weight

Z-M42-I: Industrial Edition

Features special screws to fix focus and aperture settings even in rough situations.

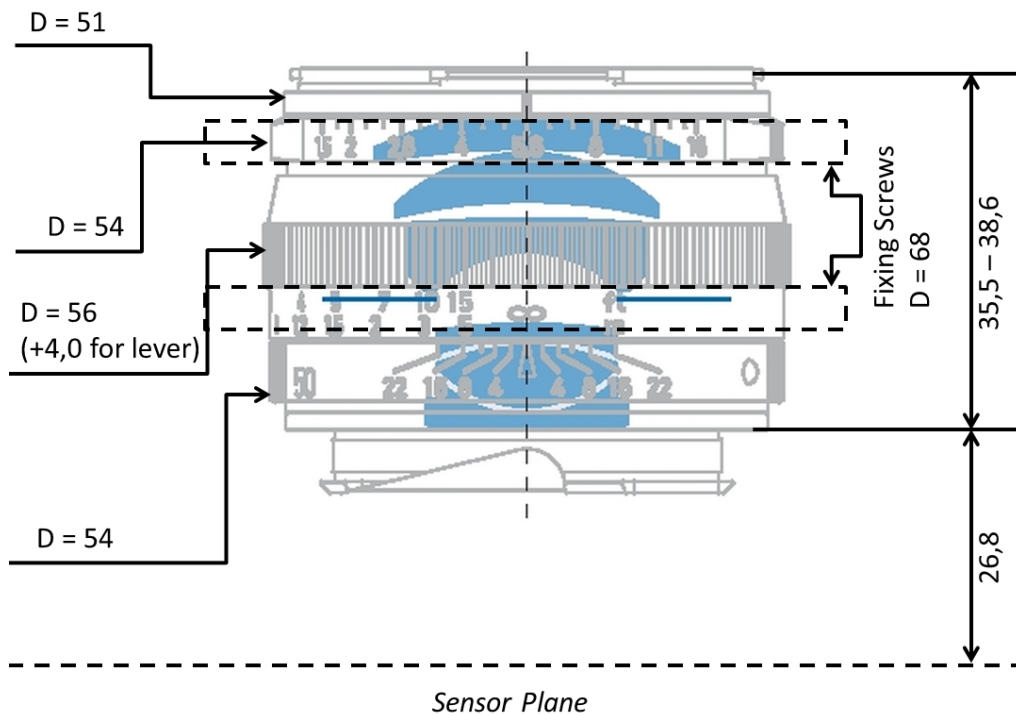
Camera Mounts

M42 screw mount.
Flange Focal Distance
26,8mm
Adapter Needed!

All pictures and sketches show the standard lens with M-bayonet. Please see the sketch of the industrial M42 Mount at the end of this data sheet to get information about the screw mount!
1) All Data for infinite focus setting

C-Sonnar T* 1.5/50

Technical Specifications



Focal length	50 mm
Aperture range	f/1,5 – f/16 (1/3 stop intervals)
Number of elements / groups	6 / 4
Min. working distance (object to sensor)	900 mm (2,95 ft.) – ∞
Min. free working distance	830 mm (2,73 ft.) – ∞
Angular field²⁾ (diag. / horiz.)	45 / 38°
Max. diameter of image field	43 mm (1.7")
Flange focal length	26.8 mm (1.05") with M42 Mount
Coverage at close range²⁾	370 x 450 mm (14.5 x 17,6")
Image ratio at close range	1:16
Filter-thread	M 46 x 0.75
Weight	250 g (0.55 lbs.)
Camera mount	M42 with Flange Focal Distance 26,8 mm

2) referring to Full Frame Format

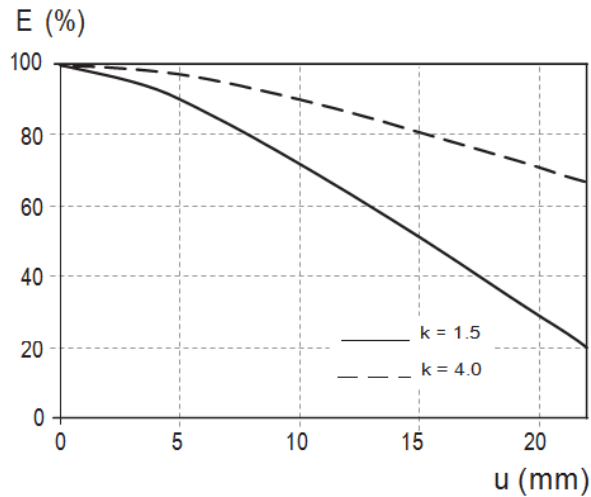
All pictures and sketches show the standard lens with M-bayonet. Please see the sketch of the industrial M42 Mount at the end of this data sheet to get information about the screw mount!

1) All Data for infinite focus setting



C-Sonnar T* 1.5/50

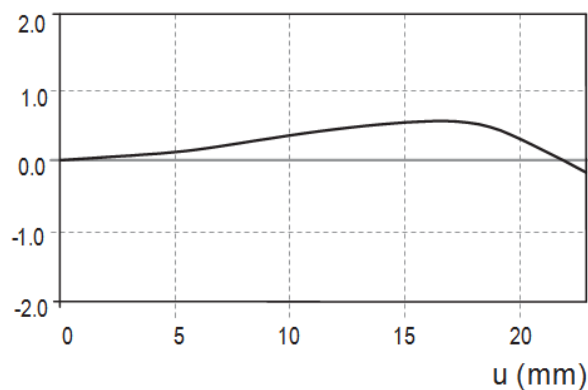
Relative Illuminance¹⁾



The relative illuminance shows the decrease in image brightness from the image center to the edge in percent.

— f-number 1.5
... f-number 4.0

Relative Distortion¹⁾



The relative distortion shows the deviation of the actual image height from the ideal one in percent.

All pictures and sketches show the standard lens with M-bayonet. Please see the sketch of the industrial M42 Mount at the end of this data sheet to get information about the screw mount!

1) All Data for infinite focus setting

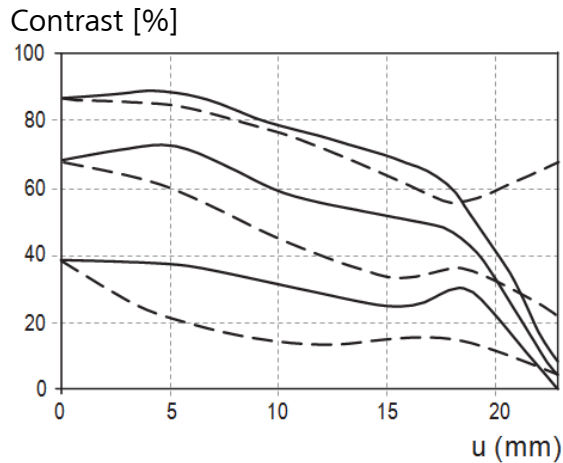
07/14 · Subject to change.

Carl Zeiss AG · www.zeiss.com/lenses4industry



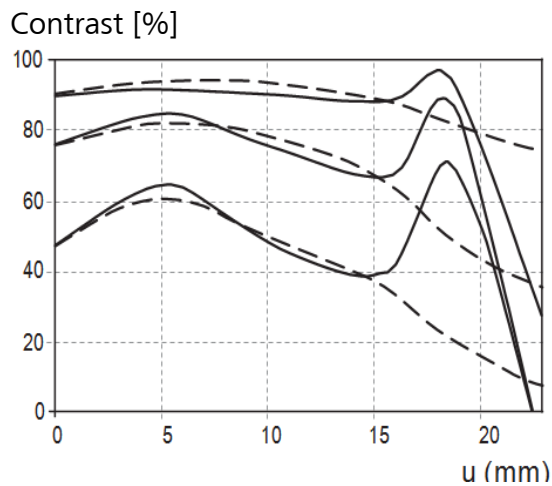
C-Sonnar T* 1.5/50

MTF Charts¹⁾



The Modulation Transfer (MTF) as a function of image height (u) and slit orientation (sagittal, tangential) has been measured with white light at spatial frequencies of $R = 10, 20$ and 40 cycles/mm.

f-number 1.5
— Saggital
... Tangential



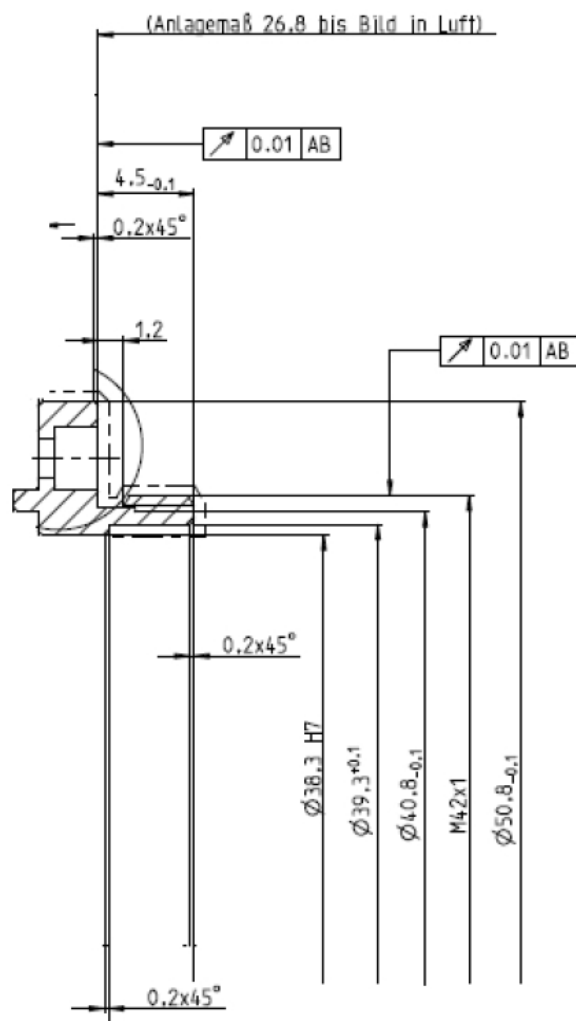
f-number 4
— Saggital
... Tangential

All pictures and sketches show the standard lens with M-bayonnet. Please see the sketch of the industrial M42 Mount at the end of this data sheet to get information about the screw mount!
1) All Data for infinite focus setting



C-Sonnar T* 1.5/50

Sketch of M42 Mount



All pictures and sketches show the standard lens with M-bayonet. Please see the sketch of the industrial M42 Mount at the end of this data sheet to get information about the screw mount!
1) All Data for infinite focus setting